



**ONE**  
**ALB**  
**UQU**  
**ER**  
**MCUQ**

# Week-by-Week Comparison of Gating Criteria

14 Day Average

| <b>ABQ<br/>(Bernalillo<br/>County)</b>    | <b>Official DOH<br/>Status<br/>as of 12/28/20</b> | <b>Unofficial<br/>Status*<br/>as of 01/04/21</b> | <b>Unofficial<br/>Status*<br/>as of 01/11/21</b> | <b>Criteria to<br/>Move to<br/>Yellow</b> |
|---|---|--|--|---|
| <b>Positive<br/>Cases per<br/>100,000</b> | <b>53.8 cases</b>                                 | <b>46.8 cases</b>                                | <b>52.7 cases</b>                                | <b>8 cases</b>                            |
| <b>Test<br/>Positivity<br/>Rate</b>       | <b>11.3%</b>                                      | <b>7.7%</b>                                      | <b>9.7%</b>                                      | <b>5% or less</b>                         |

\*Data from COA ENH Department

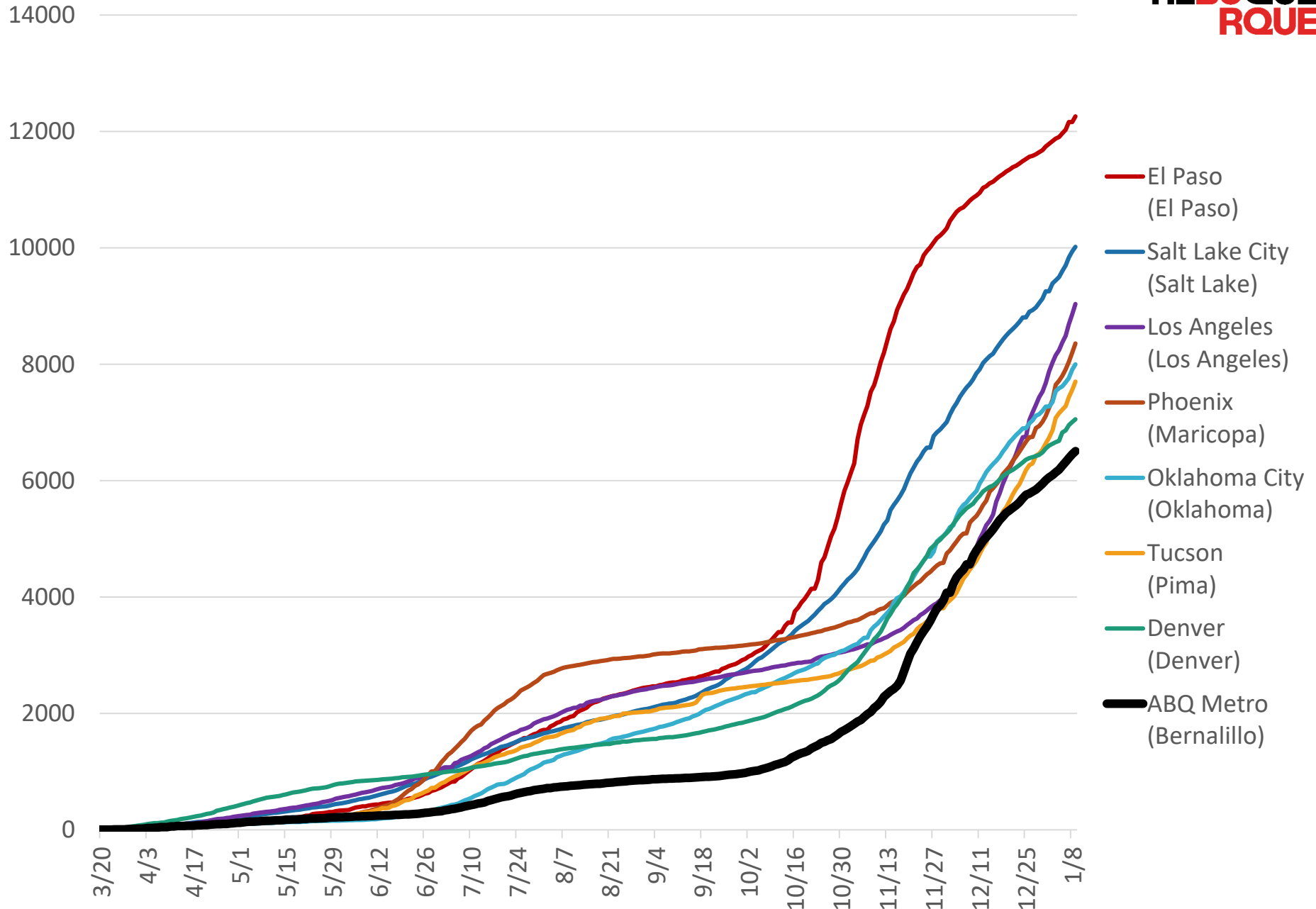
# City by City Comparison

|  | <b>Albuquerque</b><br>(Bernalillo) | <b>Denver</b><br>(Denver) | <b>Tucson</b><br>(Pima) | <b>Los Angeles</b><br>(Los Angeles) | <b>Phoenix</b><br>(Maricopa) | <b>Salt Lake</b><br>(Salt Lake City) | <b>El Paso</b><br>(El Paso) | <b>Oklahoma City</b><br>(Oklahoma) |
|--|------------------------------------|---------------------------|-------------------------|-------------------------------------|------------------------------|--------------------------------------|-----------------------------|------------------------------------|
| <b>Total county population</b>                               | <b>677,692</b>                     | <b>693,417</b>            | <b>1,019,722</b>        | <b>10,098,052</b>                   | <b>4,253,913</b>             | <b>1,120,805</b>                     | <b>837,654</b>              | <b>655,057</b>                     |
| <b>Confirmed COVID-19 cases to date</b><br>(per 100K people) | <b>6,451</b>                       | <b>7,007</b>              | <b>7,562</b>            | <b>8,859</b>                        | <b>8,201</b>                 | <b>9,937</b>                         | <b>12,160</b>               | <b>7,908</b>                       |
| <b>Total Tested</b><br>(per 100K people)                     | <b>2,525</b>                       | <b>4,157</b>              | <b>2,407</b>            | <b>4,123</b>                        | <b>4,026</b>                 | <b>3,835</b>                         | <b>1387</b>                 | <b>1,187</b>                       |
| <b>COVID-19 deaths</b><br>(per 100K people)                  | <b>9</b>                           | <b>3</b>                  | <b>13</b>               | <b>13</b>                           | <b>11</b>                    | <b>3</b>                             | <b>14</b>                   | <b>2</b>                           |
| <b>% of new tests positive</b><br>(7 Day Average)            | <b>10.8%</b>                       | <b>5.7%</b>               | <b>30.5%</b>            | <b>21.8%</b>                        | <b>20.5%</b>                 | <b>21.1%</b>                         | <b>15.2%</b>                | <b>21.8%</b>                       |

Data collected Jan. 8, 2021

Source: CDC & Johns Hopkins, 7 Day total

# Cumulative Confirmed per 100k



# Cumulative COVID Vaccines Administered

State of NM

| Date     | Moderna | Pfizer | Total  |
|----------|---------|--------|--------|
| 01/09/21 | 14,032  | 53,834 | 67,866 |

**ONE  
ALBUQUERQUE**

Data from NM State EOC



## PHASE 1A

- Hospital personnel
- Residents and staff of long-term care facilities
- Medical first responders
- Congregate setting workers (homeless shelters, correctional facilities, residential treatment centers, and community homes)
- Persons providing direct medical care and other in-person services
- Home-based healthcare and hospice workers

\*Winter



## PHASE 1B

- Persons 75+
- Persons 16+ at risk of COVID complications
- Frontline essential workers unable to work remotely: Early education and K-12 educators/staff, caregivers, grocery stores, food and agriculture, public transit, critical manufacturing, public health, public safety, mortuaries, indigent care, non-hospital laboratories
- Vulnerable populations: Residents of congregate settings<sup>†</sup>

\*Winter - Spring



## PHASE 1C

- Adults 60+
- Other essential workers unable to work remotely: Transport and logistics, utilities, energy, water and wastewater, food service, retail, shelter and housing, financial services, IT and communications, energy, legal and accounting, media, veterinary and livestock services

\*Spring



## PHASE 2

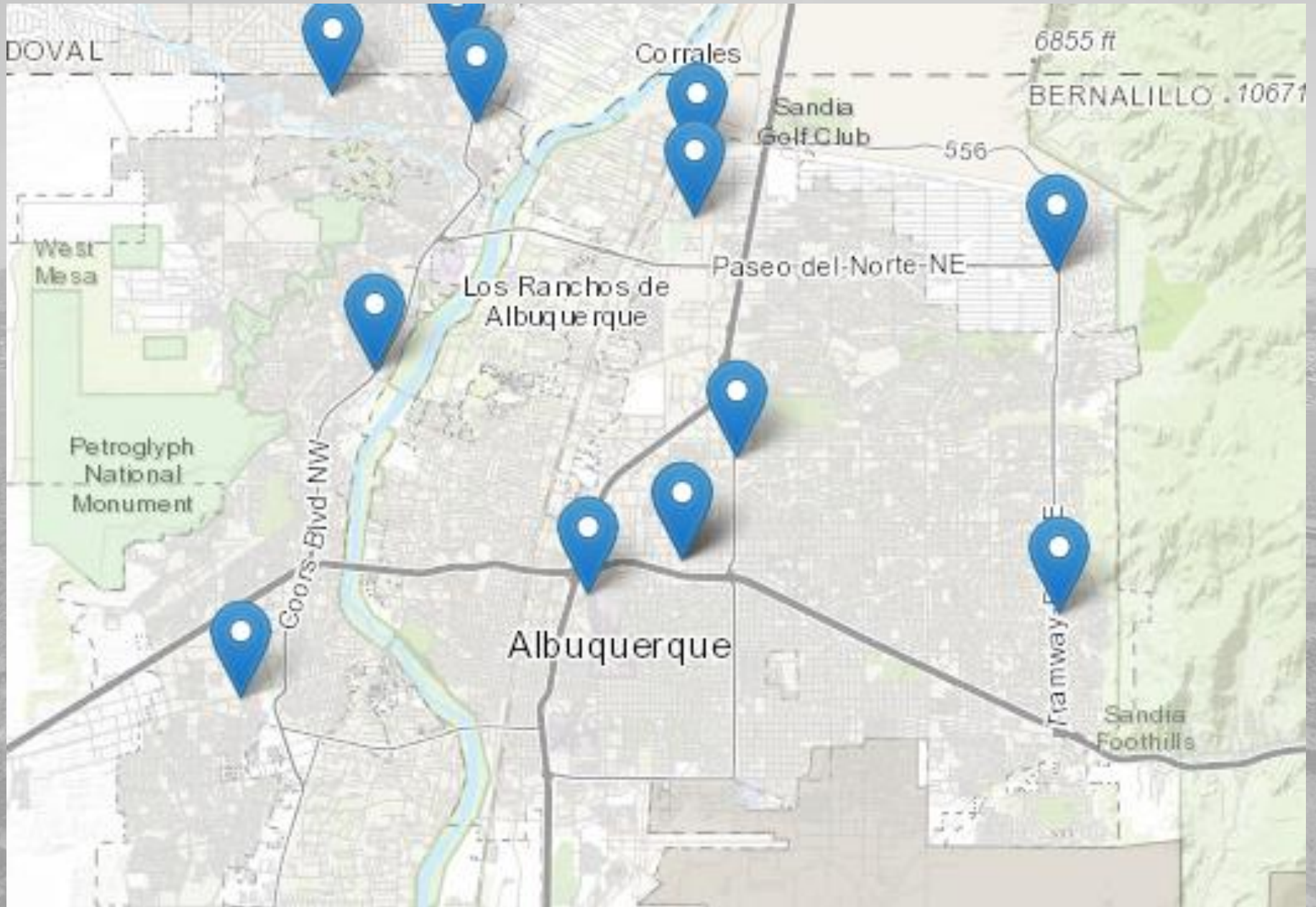
Members of the general public (age 16+)

\*Summer

*\* Estimated time frames; dependent on DOH receiving vaccine*

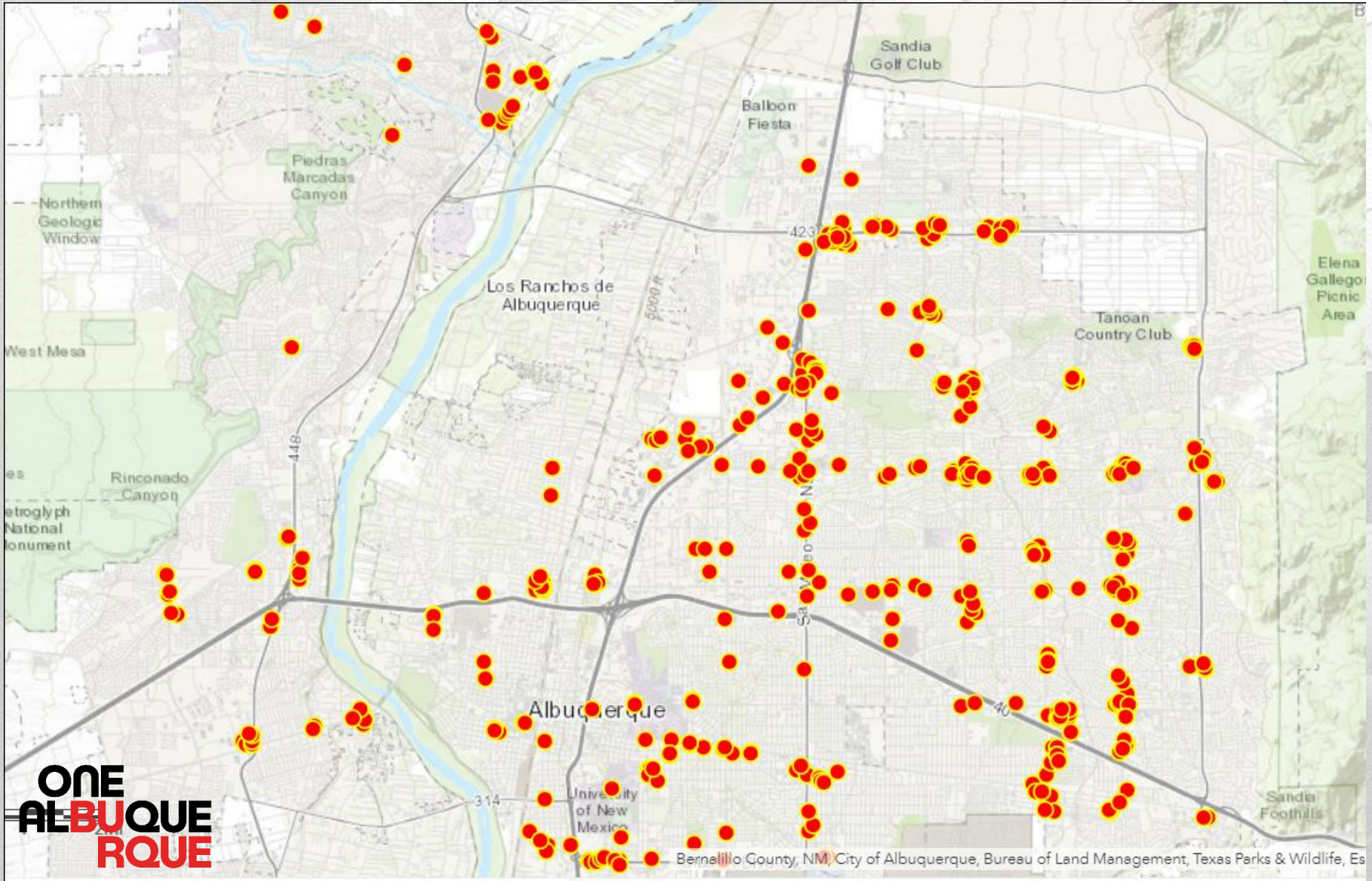
*†Vulnerable populations at risk of COVID complications can be vaccinated sooner*

# Testing Sites in ABQ



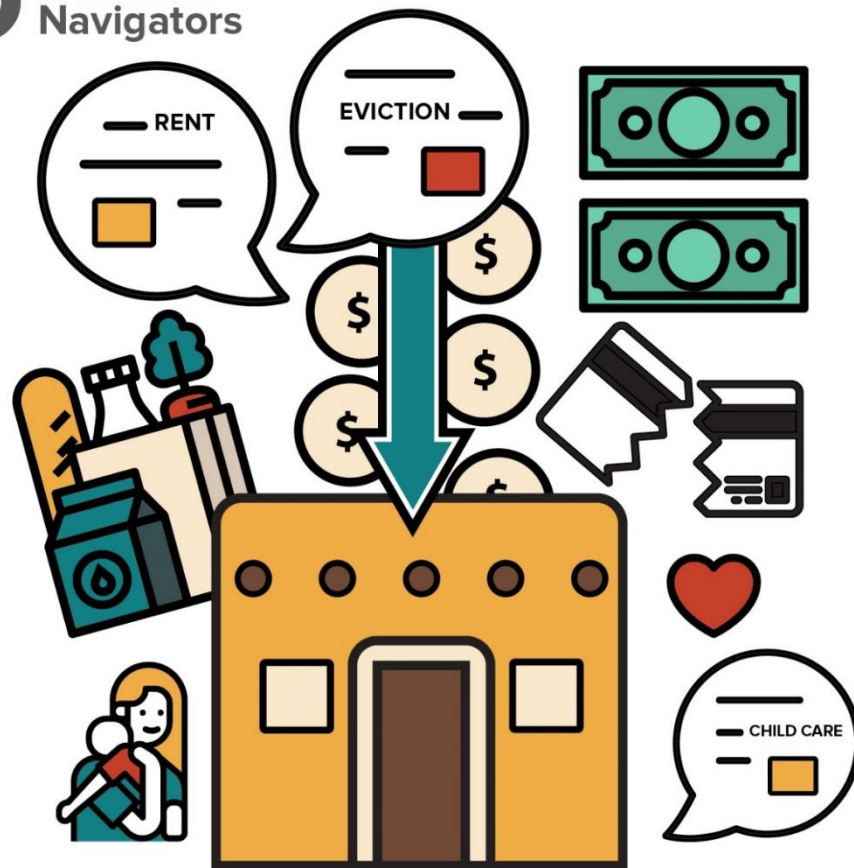
# Enforcement Interactions

December 8, 2020 – January 8, 2021



Bernalillo County, NM, City of Albuquerque, Bureau of Land Management, Texas Parks & Wildlife, Es





## **Worried about money because of COVID-19?**

*Our Financial Navigators are working with more than 100 partners to help families get what they need.*

**CALL 311 OR VISIT [CABQ.GOV/FINNAV](https://cabq.gov/finnav) TO GET  
CONNECTED TO RESOURCES**



**INDIVIDUALS**

**\$900,000 in eviction assistance  
to over 900 families**

**\$1 million budgeted for next year**



**RESIDENTS**

**\$2 million Fast-Track to permanent  
housing program vouchers**

**30 households already enrolled**

| Type and level of group activity                          | Low occupancy                |                             |                   | High occupancy               |                             |                   |
|---|------------------------------|-----------------------------|-------------------|------------------------------|-----------------------------|-------------------|
|   | Outdoors and well ventilated | Indoors and well ventilated | Poorly ventilated | Outdoors and well ventilated | Indoors and well ventilated | Poorly ventilated |
| <b>Wearing face coverings, contact for short time</b>     |                              |                             |                   |                              |                             |                   |
| Silent  | Low                          | Low                         | Low               | Low                          | Low                         | Medium            |
| Speaking  | Low                          | Low                         | Low               | Low                          | Low                         | Medium            |
| Shouting, singing   | Low                          | Low                         | Medium            | Medium                       | Medium                      | High              |
| <b>Wearing face coverings, contact for prolonged time</b> |                              |                             |                   |                              |                             |                   |
| Silent  | Low                          | Low                         | Medium            | Low                          | Medium                      | High              |
| Speaking  | Low                          | Low*                        | Medium            | Medium*                      | Medium                      | High              |
| Shouting, singing   | Low                          | Medium                      | High              | Medium                       | High                        | High              |
| <b>No face coverings, contact for short time</b>          |                              |                             |                   |                              |                             |                   |
| Silent  | Low                          | Low                         | Medium            | Medium                       | Medium                      | High              |
| Speaking  | Low                          | Medium                      | Medium            | Medium                       | High                        | High              |
| Shouting, singing   | Medium                       | Medium                      | High              | High                         | High                        | High              |
| <b>No face coverings, contact for prolonged time</b>      |                              |                             |                   |                              |                             |                   |
| Silent  | Low                          | Medium                      | High              | Medium                       | High                        | High              |
| Speaking  | Medium                       | Medium                      | High              | High                         | High                        | High              |
| Shouting, singing   | Medium                       | High                        | High              | High                         | High                        | High              |

**Risk of transmission**

Low ■ Medium ■ High ■

\* Borderline case that is highly dependent on quantitative definitions of distancing, number of individuals, and time of exposure



ONE  
ALB  
UQU  
ER  
MQU